

DOING OUR PART

Let's do our part to help ensure our communities don't follow the path of those in the Lake Conundrum!

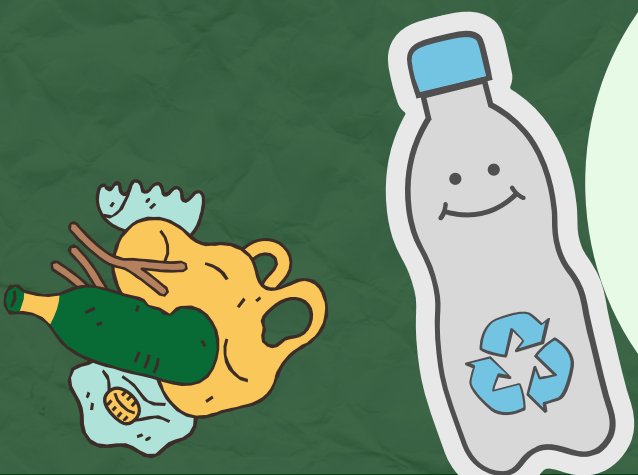


1 - MAKE A PLAN

In this project, we are going to do our part in keeping our community or school clean. Speak with a parent / guardian / teacher to make a plan for a place and time you will appropriately dispose of litter. Also check with an adult to make sure you follow any necessary safety guidelines.

2 - GET OUT THERE!

After you've made your plan and taken the necessary steps to make sure you're collecting litter safely, get out there with the intention to support your community. Be sure to count your pieces of litter as you dispose of them and put your litter items in the appropriate spots!



3 - JOIN THE TEAM

We are all live on Earth together, so let's join forces to help clean up our home. As each of us cleans our community, let's add the total number of pieces of litter that were picked up to see the total impact we are making. Use the forms on the Lake Conundrum Activity Page to submit your results and see how the rest of the world is going.

Multiple entries encouraged!